



THERMO KING

FRC
06-2021

A400

Loginec
Verbeurtenus



Loginex¹
We deliver trust

Loginex¹
We deliver trust
www.loginex.pl
+48 223 733 000

WND 61F21

KRONE

Loginex¹

We deliver trust

www.loginex.pl

+48 223 783 000

WND 61F2

 **KRONE**

Loginex¹

We deliver trust

[nex.pl">www.loginex.pl](http://www.logi<span style=)

+48 223 783 000



WND 61F2

 **KRONE**



THERMO KING



A400

WVD21F2

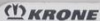
WVD21F2



WVESP 80103979889

Body - Serial Number 071000
 Body - Production Date 06-2021

Krone ID F0979359



Brake approval no. E4 13R-112029

Brake calculation no. GECB18064

Reference braking forces

Values for $z = 45\%$
 $r_{syn} = 518\text{mm}$

Axle	1	2	3
GZ [bar]	1,0	6,6	1,0
T [bar]	402	4036	401

Data for braking system

Vehicle type SD Internal no. F0979359



Pm [bar] → 6,5



Pm [bar] → 0,6 1,6 4,5 6,5

- Semi-trailer
- Centre-axle-trailer
- Drawbar trailer

Axle no.	H			S			D			T		
1	1100	0,2	1,4	9000	5,3	0,4	1,3	4,5	6,6	16	64	76
2	1100	0,2	1,4	9000	5,3	0,4	1,3	4,5	6,6	16/24	63	76
3	1100	0,2	1,4	9000	5,3	0,4	1,3	4,5	6,6	16/24	63	76



Fahrzeugwerk Krone
 Beteiligungs-GmbH

e1*2007/46*0232

WKESD00000979359

Typ SD

L: 14040 mm

W: 2600 mm

b/b_{max}: 12000 mm

b_{min}: mm

Plate reading to dimensions pursuant to 90/269

kg 39000 kg

0- kg 0- 12000 kg

1- kg 1- 9000 kg T

2- kg 2- 9000 kg T

3- kg 3- 9000 kg T

Manufacturer's delivery plate pursuant to CE 01/190291

ATP APPROVED FOR TRANSPORT
Dopuszczenie do transportu
OF PERISHABLE FOODSTUFFS
szybko psujących się artykułów żywnościowych

APPROVAL NUMBER
Numer dopuszczenia

PL-COCH 3247/2021

EQUIPMENT NUMBER
Numer pojazdu

WKESD000000979252/071033

ATP MARK
Znak ATP

FRC



VALID UNTIL
Ważny do

30-06-2027







 **KRONE**

Blue and white technical label with text and a yellow arrow pointing to the right.





Technical label with a diagram of a tire and a wrench icon.

Technical label with various symbols and text.

Label with a logo on the left side of the tire bracket.









www.lo

48 223















JOST
OPTIMA
OPTIMALE
SWING-ARM-ACHSE
21
22
23
24

JOIST

OPTIMA

OPT800S-1R

210607 16002172

Hüblast 12 t je Stütze
lifting cap. each leg

stat. Prüflast 25 t je Stütze
stat. test load each leg



Made in Germany

THERMO KING



A400




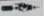
UHD112



Warning labels and a white label with the number '96' are located at the bottom of the engine compartment.



KRONE

	
2 PIN	3 PIN
ALU-55V (SP)	ALU-55V (SP)



WND61

ATP APPROVED
OF PERISHA
APPROVAL NUMBER PL-
EQUIPMENT NUMBER WKESD
ATP MARK FR
VALID UNTIL 30-06-

INSTRUKCJA

TY THERMO KING



thermo.king.pl/hotbox



Row of icons: TY logo, a person icon, a document icon, and a QR code.



A400

Tracking 

14:37

UKŁAD

PODSUMOWANIE

LICZNIK GODZIN

GODZINA/DATA

PALIWO

PODSUMOWANIE GODZIN

Praca silnika:

4367

Łącznie przeprac.:

4461

Próby rozr. elektr.:

159

Praca siln. elekt.:

93

Sterownik włączony:

9399

Próby uruch. siln.:

9046

BLOKADA

WSTECZ

PRAWNE

INSTRUKCJA









GOODYEAR

3351653225 60
17 1/2 R



MADE IN THAILAND

GOODYEAR INTERNATIONAL

GHT50

*USE LARGE SIZE TO IMPROVED PERFORMANCE OF MOTORCYCLES WITH THE EXCEPTED LOADS & SPEEDS
CHECK INFLATION PRESSURE REGULARLY AND AT REGULAR INTERVALS
EXCESSIVE OF INFLATION PRESSURE MAY CAUSE WEAR, LOSS OF CONTROL, AND POSSIBLE ACCIDENTS

WARNING:
SHOULDER WEAR MAY OCCUR FROM YOUR LOCATION THE WAY STREET RIDE AND EXCESSIVE LOADS TO DRIVE

BILITY
RESISTANCE

WALKER

385/65R22.5

160K
AT 130 PSI

158L



inch/mm

29.5 mm

OFF

ON

ZERO

10

20

2

3

4

5

6

7

8

9

1





TORQUE

MADE IN CHINA

TQ022

REGROOVABLE

HO 10763

DOT

385/65R22.5

160K
130PSI

TREAD: 4 PLYS STEEL
SIDEWALL: 1 PLY STEEL

20PR
LOAD RANGE 1

MAX. LOAD: 4500 Kg (9920 Lb)

26H24-46

M+S



inch/mm

13.93 mm

OFF

ON

ZERO

20

7 8 9 10



Sava

GENERAL PURPOSE
TRUCK & BUS

CARGO 5

2613805

1L76 1828

335/65R22.5

164 K

158L

1584562



inch/mm

5.19 mm

OFF

ON

ZERO

10 20
3 4 5 6 7 8 9 1





inch/mm

5.99 mm

OFF ON ZERO





GOODYEAR
SABOTAGE 199X

199X 199X
199X 199X

GHT50

WARNING: TO AVOID PERSONAL INJURY, DO NOT EXCEED GRADE, SPEED, WEIGHT RESTRICTIONS OR STORAGE
LIMITS. ALWAYS WEAR YOUR SEATBELT AND USE PROPER TIE-DOWN TECHNIQUE. ALWAYS STAY SEATED AND
DO NOT OPERATE THE EQUIPMENT IF YOU ARE UNDER THE INFLUENCE OF ALCOHOL OR DRUGS.

ICE

20P

385/65R22.5

160K
AT 180 PSI

15BL

225-01 JL



inch/mm

75.4 mm

OFF

ON

ZERO

20





inch/mm

4.29 mm

OFF

ON

ZERO

10 20
3 4 5 6 7 8 9 1



A400



41001F2



Logi

Comet

WND61F2

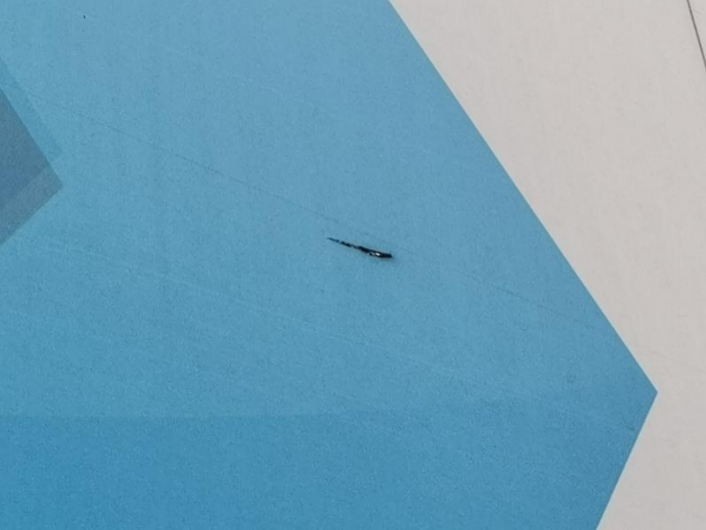
ATP APPROVED FOR TRANS
PORTATION OF PERISHABLE FOODS
APPROVAL NUMBER: PL000H 321-102
EQUIPMENT NUMBER: WKS0000000979-10

VICE

55 76 63
51 209 902

KRONH









A close-up photograph of the side of a white delivery truck. The truck features a large, faint white circle on its side panel. To the right, the text "We deliver" is printed in a bold, black, sans-serif font. Above the text, there are blue and white geometric patterns. The truck's lower edge shows a grey trim strip with small circular details, and the rear wheels with blue lug nuts are visible at the bottom right.

We deliver



We deliver trust

WILLYON
EQUIS ACCREDITED





Trust











PL WND 61F2

 **KRONE**





482

ATTENTION
ANGLES MORTS

WND 61F2

KRONE

KRONE























Yellow warning label

WMD28F2

ertrust

Yellow warning label



Technical specifications and safety information label





MODEL: REPRODUCTION OF
W. #1: TYPE: (C) 2012
W. #2: (M) 1/1
MATERIAL: ALUMINUM
MODEL: 10
AN. PRODUKTION: 10
FABRIKANT: 10
SERIE: 10







ATP

APPROVED FOR TRANSPORT OF PERISHABLE FOOD
Zugelassen zur Beförderung leichtverderblicher Lebensmittel

APPROVAL NUMBER: TÜV Zulassungsnummer:

D TÜV 36-36

EQUIPMENT NUMBER: Ausrüstungsnummer:

071033

ATP MARK: ATP-Kennzeichen

IR

VALID UNTIL: Gültig bis:

06-2027

Mark 0: F08200



Country

Manufacturer

Body Model

Body - Serial Number

Body - Production Date



Brake approval no.

Reference braking forces

Values for $z = 45\%$
1095: 518mm

Brake calculation no.

Axle	1	2
1095	1.0	0.6
1100	452	403
1105	401	366

Data for braking system

Vehicle type

Axle no.	1	2	3	4	5
1095	0.5	0.6	1.0	4.5	



