



Loginex¹
We deliver trust

www.loginex.pl
+48 223 783 000



KRONE

WND 30F2

Loginex¹

We deliver trust

www.loginex.pl
+48 223 783 000



WND 30F2

 **KRONE**

Loginex¹
We deliver trust

www.loginex.pl
+48 223 783 000



WND 30F2

KRONE





WV 30FZ

ginex
We deliver to

KE810000183230X



 **KRONE**

www.krone-trailer.com

Typ

SD

L: 13860 mm

W: 2550 mm

b/b_{MAX}: 12000 mm

b_{MIN}: mm



Plate relating to dimensions 36A,38C

Fahrzeugwerk Krone Beteiligungs-GmbH

Hennrich-Krone Str. 10 / 48880 Spelle

e1*2007/46*0232

WKESD000000982890

kg 39000 kg

0- kg 0- 12000 kg

1- kg 1- 9000 kg T

2- kg 2- 9000 kg T

3- kg 3- 9000 kg T

Manufacturer's statutory plate pursuant to CR 810 150311

 **KRONE**

Brake approval no

E4 13R-112705

Brake calculation no GETK10025

Reference braking forces

Values for $z = 45\%$

$r_{dyn} = 449mm$

Axle	1	2	3			
F_{z1} [kN]	1.0	6.4	1.0	6.4	1.0	6.4
T [kNm]	414	4023	413	3949	413	3949

Data for braking system

Vehicle type SD

Internal no

FC

Axle no	T			T			Serr- o Centr Draw				
	P_m [bar] →	6.5	0.6	1.6	4.5	6.5					
1		1100	0.2	1.5	9000	3.9	0.4	1.4	4.4	6.4	15
2		1100	0.2	1.5	9000	3.9	0.4	1.4	4.4	6.4	15
3		1100	0.2	1.5	9000	3.9	0.4	1.4	4.4	6.4	15



DAKEN

WIND 90 FZ
X

Warning label with a triangle symbol and illegible text.

990







 KRONE











MC
2000













 KRONE







MAXIMUM WEIGHT
MAXIMUM HEIGHT
MAXIMUM WIND SPEED
MAXIMUM TILT
MAXIMUM WIND DIRECTION
MAXIMUM WIND GUST
MAXIMUM WIND BURST
MAXIMUM WIND SQUALL
MAXIMUM WIND STORM
MAXIMUM WIND HURRICANE
MAXIMUM WIND TYPHOON
MAXIMUM WIND MONSOON
MAXIMUM WIND TROPICAL CYCLONE
MAXIMUM WIND SUPER TROPICAL CYCLONE
MAXIMUM WIND SUPER TYPHOON
MAXIMUM WIND SUPER MONSOON







SAILUN

MADE IN VIETNAM

655 PLY

LONG HAUL

435/50R19.5

STANDARD

1000

1000
1000

10
AT 90

21/05

NG LAUL

435/50R19.5

STANDARD TUBE 14.00

M0476024

160J
AT 900 kPa

21/05





inch/mm

9.81

20

ON

ZERO



ZONE

Continental

21/05

Conti Hybrid

ENGINEERED IN GERMANY

UNLIM. MILEAGE
LOAD RANGE M

CONTINENTAL

3105754

36

INOS

INOS

INOS

445/45R19.5 160 J

130 PSI
22 PR

0030055
026966 52TR2



21/05



Inch/mm

10.41

OFF

ON

ZERO

20

6 7 8 9 1





DUNLOP

RADIAL TUBELESS

FRI

REGROOVABLE

SAFETY BELT

TRONE

SP 247

435/50R19.5

160 J

2890133



SP 247

435/50R19.5

160 J

2890133

KNORR

KNORR

KNORR



Inch

6.93 mm

OFF ON ZERO

0 20
4 5 6 7 8 9 1





inch/mm

5.92^{mm}

OFF ON

ZERO

0 20
4 5 6 7 8 9





inch/mm

OFF ON ZERO

20

8 7 6 5 4

10.43





inch/mm

90.1 mm

OFF



ON



ZERO

20

5 6 7 8 9 10



WAD 30FD
X



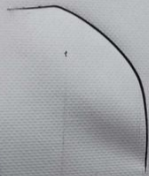
EN 12542-RL
Krone 2021

2

WALL
STOP



 **KRONE**



A close-up photograph of the side skirt of a white truck. The side skirt is white and features the Krone logo and name in blue. The logo consists of a stylized 'K' with a crown-like top. The name 'KRONE' is written in a bold, sans-serif font. The truck is parked on a gravel surface. The side of the truck's cargo area is visible above the skirt, showing metal latches and straps. The wheels of the truck are visible in the background.

 **KRONE**



17 18 19 20 21 22 23 24 25 26 27 28 29 30
17 18 19 20 21 22 23 24 25 26 27 28 29 30























Loginex
We deliver trust

www.loginex.pl
+48 223 783 000



WND-30F21





13



Loginex¹

We deliver trust

www.loginex.pl
+48 223 783 000

















Loginex¹
We deliver trust

www.loginex.pl
+48 223 783 000



WIND 30F2

KRONE

KRONE





ANGLES
MORTS

WND 30F2

 **KRONE**

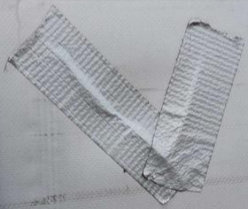














 KRONE











NTION







Label with QR code and text, likely a manufacturer's or identification label, located on the side of the trailer.

WŁAŚCICIEL: Millennium Leasing sp. z o.o.
NR PRODUKTU: 704/ML/PR/2025
NR REJ: WND30F2
MARKA: KRONE
MODEL:
ROK PRODUKCJI: 2021
POJEMNOŚĆ: KACZEPA
SEKTOR:



KRONE	
SD	
WKT5000000082990	
1000 mm	
2000 mm	
3000 mm	
4000 mm	
5000 mm	
6000 mm	
7000 mm	
8000 mm	
9000 mm	
10000 mm	

DAKEN

DAKEN

WMD 90F2
X



